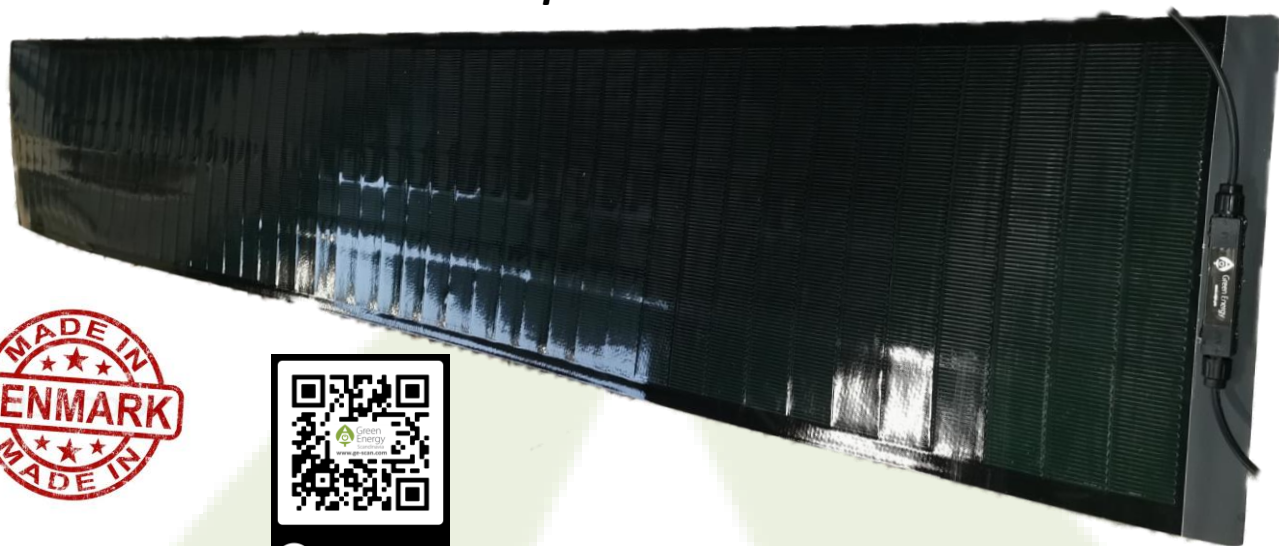


CIGS solarpanel MIPV 215-95



Nominal power P _{mpp} [W]	95
Tolerance [W]	-0/+5
Voltage at nom. power V _{mpp} [V]	24,97
Current at nom. power I _{mpp} [A]	3,91
Open circuit voltage V _{oc} [V]	31,34
Short circuit current I _{sc} [A]	4,75
Max. system voltage IEC [V]	1000
Max. serial fuse rating [A]	10
Temperature coefficient V _{oc} [%/°C]	-0.38
Temperature coefficient I _{sc} [%/°C]	0.008
Temperature coefficient P _{mpp} [%/°C]	-0.4
Temperature range [°C]	-40 to +85
Max. mechanical load	2400 Pa, 245 kg/m ²
Certification	EN IEC 61646; EN IEC 61730-1 &-2
Safety class II	



Performance guarantee 10 years on 90% of P_{mpp} under STC1 & 25 year on 80% of P_{mpp} under STC1
Warranty 5 years' workmanship after delivery date